

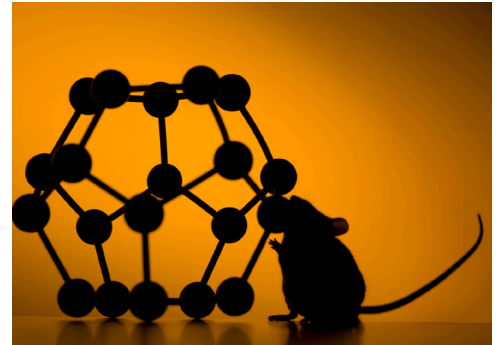
# FC-10

A High-Resolution, Galvanic Fuel-Cell Oxygen Analyzer



# The FC-10 Oxygen Analyzer

The FC-10 is a galvanic fuel-cell oxygen analyzer capable of measuring oxygen partial pressure or concentration in a variety of applications from respirometry to industrial gas monitoring. With proprietary digital signal processing, the FC-10 is a high-resolution, low-noise oxygen analyzer with superior stability.



## Digital, 2-line alphanumeric display

The FC-10 has a display and control knobs that allow the user to span, calibrate, and change multiple settings at the analyzer.

## Barometric Pressure Compensation

Standard in our analyzers, barometric pressure compensation eliminates errors caused by ambient pressure variation.

## Three year warranty

Sable Systems instruments are warranted to be free of defects in material or workmanship for a period of three (3) years from date of purchase. See website for warranty policy.

## Lifetime Technical Support

Our technical support team will help you overcome any challenges you may face with equipment setup as well as provide advice and assistance on future applications.

## Specifications:

**Sensor Type:** Fuel Cell

**Range:** 0-100% O<sub>2</sub>

**Accuracy:** O<sub>2</sub>: 0.1% typical 2-100%

**Resolution:** up to 0.0001%O<sub>2</sub>

**Drift:** < 0.01%O<sub>2</sub>/hr (At constant temperature with constant N<sub>2</sub> flow at 50 mL/min)

**Weight:** 6lbs/2.8kg (11lbs/5kg with packaging)

**Dimensions:** W: 12in/31cm, H: 4in/10cm, D: 13.5in/34cm

**Power Requirements:** 12-15 VDC nominal, 25-150mA consumption; universal AC adapter supplied

**Flow Rate:** 5-2,000mL/min (10-500mL/min recommended)

**Analog Outputs:** Multiple range 0-5V BNC for O<sub>2</sub>, barometric pressure, sensor temperature, and user selectable

**Digital Outputs:** RS-232 (serial)

**Operating Conditions:** 0-50 °C, non-condensing

**Fuel-Cell Life:** 1-2 years in normoxia, typical

**Cell Temperature Accuracy:** 0.2 °C typical (0-60 °C)

**Temperature Resolution:** 0.001 °C

**Barometric Pressure Accuracy:** 1% of reading

**Barometric Pressure Resolution:** 0.0001kPa

## Optional Configurations:

**Pressure Monitoring:** Barometric pressure sensor may be plumbed into gas stream providing line pressure instead of atmospheric pressure.

**Connectors:** a variety of external gas connectors and fittings are available to meet your needs. Call for more information.

## Contact Sable Systems.

We encourage you to discuss your application with us.

**Phone:** 800-330-0465 (toll-free) / 702-269-4445

**Fax:** 702-269-4446.

**On the Web:** [www.sablesys.com](http://www.sablesys.com)

**Email Us:** [mail@sablesys.com](mailto:mail@sablesys.com).